



RACING BEGINNERS INFORMATION PACK

So you have just decided to compete in motorsport, and you have chosen Circuit Excel as your entry point into this sport? Fantastic and congratulations!

The Circuit Excel Association of South Australia provides a great means of competing in affordable, grass roots, circuit based motorsport. By joining the association, you can go on to compete at a level of motorsport that suits your interest and budget.

Below is some information to help get you started if you're interested in going racing with us, or just competing at speed events here in South Australia. Alternatively, contact one of our [Committee](#) members, who will be happy to provide you with more information.

Choosing your motorsport competition level

There are two levels of CAMS administered tarmac motorsport in Australia – Speed and Race.

The first level – [Speed](#) – covers events such as [Hill climbs](#), [Super Sprints](#), and [Modern Regularity](#). At these events, you are only racing against the clock or individually nominated lap times, and as such, these events have less stringent requirements for vehicles and drivers.

The next level is racing.

The Circuit Excel Association of South Australia manages and promotes Circuit Excel racing in South Australia, with race meetings run under the [Sporting Car Club of South Australia's State Motor Racing Championship](#), governed by [CAMS regulations Group 3E – Circuit Excel](#), with rounds at both [Mallala Motorsport Park](#) and [The Bend Motorsport Park](#).



Collingrove Hillclimb Track



Mallala Motorsport Park

Become a member of a CAMS affiliated club

To be able to compete at race meetings and selected speed events, and apply to become a CAMS member and licence holder, you will need to belong to an approved CAMS affiliated club. We recommend [becoming a member](#) of the Circuit Excel Association of South Australia, as it will be the best way to keep up to date with what is occurring in the Circuit Excel category.



Acquiring and/or building a car

If you wish to buy a race ready Excel, and you're on Facebook, join groups such as [KDM SA](#) or [Hyundai Excel Track Cars](#) for the occasional posting of second hand race ready cars being sold. These two Facebook groups are also a great place to ask questions to a friendly excel racing community.

If you are planning to convert a road car into Circuit Excel race spec, Gumtree always has a healthy listing of X3 Excels – the later model twin cams (1998 – 2000) have the better engine, and power steering is beneficial (due to less turns lock-to-lock, but for better steering feedback, remove power steering assembly and join together the inlet and outlet pipes at the steering rack).

There are two options for roll cages – either purchasing a pre-fabricated bolt-in kit and installing yourself (kits are available from both [Brown Davis](#) and [AGI](#)), or having a roll cage fabricated and welded in by a professional (in or near Adelaide - [Walker Chassis](#), [MV Automatics](#), [Mad Dat Motorsport](#), or [Alex Bennett](#)).

Control tyres (Federal 595 RS-R) are exclusively available from [SA Motorsport Tyres](#), whilst two of the four control suspension packages can be purchased direct in Adelaide ([SupaShock from their Adelaide factory](#), or [MCA from AutoSport](#)), and the other two from interstate retailers ([Spax from Suspension Concepts](#), [XYZ from Performance Suspension](#)). All general safety equipment (helmets, suits, seats, harnesses etc) can be purchased from two Adelaide retailers – [AutoSport](#), or [Revolution Racegear](#).

For CAMS sanctioned race meetings, your car must be fitted with a timer from [Dorian Industries](#) – please refer to the technical regulations for the exact mounting location on the car.

CAMS Technical Regulations

For speed events, you are free to compete in any vehicle providing it passes basic a safety inspection as outlined by Schedules A & B in the [CAMS Manual – General Requirements for Cars and Drivers](#). (If you are entering the Circuit Excel class at Hill climb events, your car is expected to not exceed Circuit Excel specifications).

To go racing with us, you will need to purchase or build a car which complies with the [category specific technical regulations](#), which is both **Group 3E – Circuit Excel** and **Group 3E – Series Production Cars**, along with all other [CAMS general requirements](#). Please be aware any rulings in technical regulations **Group 3E – Circuit Excel** override any compatible rulings in **Group 3E – Series Production Cars**.

Engine and gearbox Sealing

Starting in 2018, all engines and gearboxes must be sealed by an approved engine sealer, which in South Australia, is either [CAMS approved scrutineer Fred Severin](#), or our [eligibility officer](#).

If you are having your engine re-built, the engine must be inspected during re-assembly and sealed at completion. For those just running an engine stock standard as it came with a road car, you can opt to simply have the engine sealed without inspection, using the honesty system (but if your car is amongst the top performers, you may be requested to strip down your engine for a full inspection and re-sealing).

Information on how to prepare your engine for sealing is [on our website](#).

Log Book your vehicle

Once you have completed your build and the car is race ready, you must [apply for a log book](#) and have it inspected by a CAMS approved pre-log book scrutineer, to ensure the car is safe and compliant with all regulations specific to the category. For Circuit Excel vehicles in South Australia, we recommend [Fred Severin as the pre-log book scrutineer](#).



Get your licence

To compete in Speed events, you will need to purchase a [CAMS Level 2 Speed licence](#) (also known as an L2S licence). You can apply for an LS2 licence (and CAMS Membership) online at the [CAMS website](#) (or you can print out and return an application form), listing your CAMS affiliated club membership details (such as your CEASA membership) on the application.

To compete in Race events, you will need a CAMS competition licence, with the minimum standard being a [Provisional Clubman Circuit licence](#) (PCC licence).

To obtain a CAMS PCC licence you need to submit the licence application, along with the medical report (available on the licence form) completed by your General Practitioner to CAMS Customer Service.

Due to the volume of licence renewals, your licence can take a few weeks to be processed, so remember to send this to CAMS well before your first race meeting.

Once your licence application is processed, you will receive an email from CAMS with a link to their online lecture and quiz, which covers topics such as the organisational structure of race meetings, driving standards, and flag meanings. On the successful completion of the online lecture and quiz, CAMS will issue you with a Pre-Licence Authority Form. Remember to bring this with you to your first race meeting (along with your CAMS affiliated club membership, and vehicle log book), as during the document checking process, the event organisers will ask whether it is your first race meeting. You will then leave your Pre-Licence Authority Form provided by CAMS with the Event Secretary (ask for directions when doing the documentation checking at the start of the event) for sign off by a Clerk of Course (or assistant) after successful completing an [Observed Licence Test](#) (OLT).

The OLT is a critical component of the application stage. It provides a means that you have basic understanding and knowledge of manoeuvring a vehicle at high speeds to ensure the safety of both yourself and others.

Your OLT will usually be held during the practice/qualifying session of your first race meeting. An official in the starters box will show a black flag and display your number. You then enter pit lane and follow the directions of the pit lane Marshall before being released back onto the track.

At the end of the race meeting, collect your signed off Pre-License Authority Form, and return it to CAMS member services, who will then issue you a Provisional Clubman Circuit licence and CAMS Competitor booklet (which will become your record of competition).

Please be aware, that any driver competing under a PCC licence grade will need to display a 'P' plate on the rear of their vehicle.

To upgrade from the PCC licence to the full Clubman Circuit or National Circuit licence, a driver must compete in three race events (so make sure to get your CAMS Competitor booklet signed by the Clerk of Course in the Start / Finish Tower at each event), and complete one trackside participation.

For your trackside participation, please contact the [South Australian Motor Racing Officials Association](#), and request to volunteer as a flag marshal at one of the Superkart & Modern Regularity Rounds at Mallala raceway, stating it is for a competition licence. Again, ensure you get the Chief Flag Marshall at the event to sign your CAMS Competitor booklet.

Information for your first race meeting

The following information is for those who have chosen to compete in the Circuit Excel category of the State Motor Racing Championship series, with details on what to do at your first race meeting. If you have chosen to compete in Speed events (Hill climbs, Modern Regularity or Sprint events) and need more information for your first time out, please contact the organising club of those events.

How to enter an event

To enter yourself and vehicle into one of the Sporting Car Club of South Australia's State Motor Racing Championship series, it is advised you do so via the [CAMS website](#).

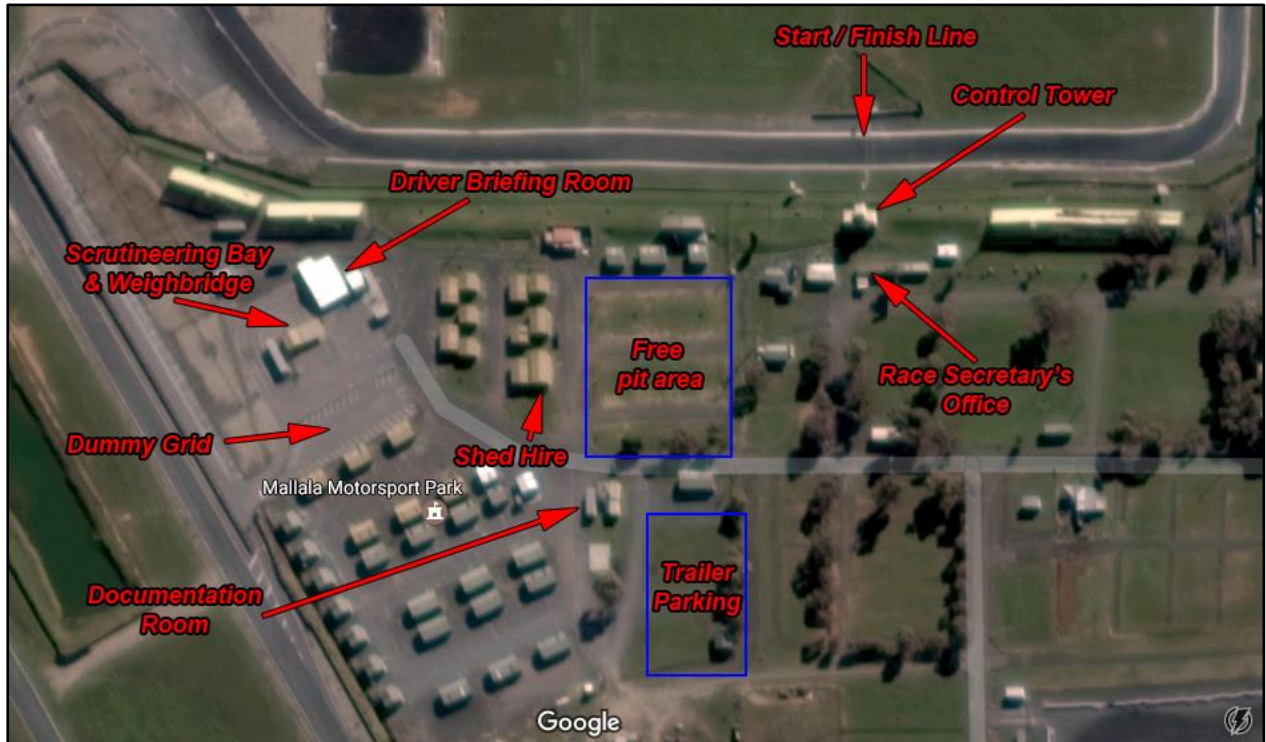
If you applied for your CAMS licence via the CAMS website, you just need to login to the members section using your licence number and password. Otherwise you will need to register an account.

Once logged in, select 'CAMS Event Entry' on the left-hand sub-menu. From there you can enter information about yourself, vehicle, crew and transporter which event organisers will use to create your entry. Once complete, click 'Quick Entry', and you will be taken to the event entry page, where you can select the next South Australian state event. Payment details for the Sporting Car Club of SA are supplied when you complete and confirm your entry.



Mallala Motorsport Park – Key Facilities

Below is an overview of the key facilities at Mallala Motorsport Park. A canteen serving a variety of hot food also operates in the pit area at all race events. A similar graphical guide for The Bend Motorsport Park will be provided in due time.



Choosing a location in the pits

When you enter an event at Mallala Motorsport Park, you are free to use the open air grassed location just inside the pits along the start/finish straight. At The Bend, the free area is any of the open tarmac area directly behind the main pit and hotel complex, and left (north) of the Welcome Centre.

There are no designated or allocated spots, purely 'first-in, best dressed'. However, it is advised to use the least space as you require - generally regarded as room for your competition vehicle and tow vehicle. Trailers are to be left in the trailer parking location.

You can alternatively hire a shed (all lockable, have mains power & lighting, and access to water) by specifying so when entering an event on the CAMS website.

Documentation

After arriving and setting up in the pits, you will need to complete the documentation process during the specified time for your category (listed in the event schedule which will be emailed to you, along with the supplementary regulations and any other forms, after your entry has been accepted). The

location for this is the 'Documentation Room' as shown on the map above for Mallala, or inside the Welcome Centre at The Bend (where the hotel concierge desk is).

Documentation involves providing organisers with your vehicle logbook (so scrutineers can inspect and sign-off your vehicle during the event), having your licence and CAMS affiliated club membership card verified, filing in a pit crew form (if required), and receiving wrist bands for yourself and pit crew, and your scrutineering 'OK' sticker to put on your car to allow it to enter the circuit.

After this is a good time to provide officials with your Competition Passbook or Pre-Licence Authority Form for signing off during the event (make sure to collect at the end of the event! The officials will not chase you down afterwards, and it will be your responsibility to get it back from the Sporting Car Club of South Australia headquarters after an event if you do not).

Drivers Briefing

At the scheduled time (listen for announcements over the loud speakers) you will be required to attend the drivers briefing session in the room marked on the map above, or in the Welcome Centre at The Bend. Make sure you sign off as having attended otherwise you may be penalised!

Dummy Grid & Post Race Checks

While an event schedule is always published, always listen to announcements over the loud speakers in case the day's schedule runs early, late or is modified. We advise to keep an eye on what is waiting or currently on track so you have an idea how far away your next session is. When your category is ready to go on track, it will be announced over the speakers to proceed to form-up (or the dummy grid as shown on the map).

For qualifying, cars are released on a first-in, first-out basis from the dummy grid. For races, you will be gridded up in start order by the dummy grid marshal (generally you start in the order of qualifying or last race finishing positioning – session results can be collected from the Race Secretary's Office as marked on the map).

After qualifying and some races, on returning into the pits, you may be directed to the weighbridge for officials to check each car is above the racing minimum weight listed in the technical regulations. At other times, you may be directed to the scrutineering bay via a marshal holding up a 'Parc Ferme' sign, which generally indicates that scrutineers will be checking you are wearing the correct and up-to-date safety apparel.

In addition to this, again always listen to loud speaker announcements between events in case you are required to report to the control tower, and always follow the direction of event officials when requested.

At the end of the race meeting

The Circuit Excel Association of South Australia holds a trophy presentation at the end of each race meeting – a club member will inform you where it is being held. Most of all, we hope you enjoy your experience racing with us, learn lots and make new friends. Hopefully we will see you at Mallala or The Bend in the near future!